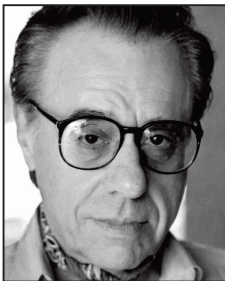


2012 OFFICIAL SCHEDULE

SEDONA INTERNATIONAL  
**FILM FESTIVAL**  
FEBRUARY 18 - 26, 2012

*145 of the BEST independent films from around the world,  
filmmakers, parties and more!*



PETER BOGDANOVICH



LEA THOMPSON



PAUL SORVINO



KEVIN CLASH & ELMO



MIRA SORVINO



DON BLACK



MACKENZIE PHILLIPS

**Where Movies Rock!**

# SATURDAY, FEB. 18

SEDONA PERFORMING ARTS CENTER

3:00 p.m.

Prog. **001**

*Sedona GREEN kickoff event*  
***Revenge of the  
Electric Car***

*Film screening followed by a  
Sustainable Solutions roundtable and  
Q&A discussion.*

7:00 p.m.

Prog. **002**

*Peter Bogdanovich presents*  
***The Last  
Picture Show***

*Meet world-renowned, Academy-  
Award nominated director Peter  
Bogdanovich and enjoy this Oscar-  
winning film on the big screen.  
Bogdanovich will receive the festival's  
Lifetime Achievement Award during  
the Q&A discussion.*

# SUNDAY, FEB. 19

\* TRT = Total Run Time. TRT and Exit times never include the Q&A with the filmmakers and/or celebrity guests.  
Please allow extra time if staying for those. Schedule subject to change.

HARKINS 1	HARKINS 2	HARKINS 3	MARY D. FISHER THEATRE	SEDONA PERFORMING ARTS CENTER	SEDONA ROUGE THEATRE
				<p><b>2:00 p.m.</b> Prog. <b>003</b></p> <p>Sedona GREEN event: <b>The Big Fix</b> followed by a Sustainability Roundtable panel discussion TRT: 1:28, Exits: 3:28*</p>	
<p><b>5:00 p.m.</b> Prog. <b>004</b></p> <p><b>What if Cannabis Cured Cancer</b> preceded by <i>When Cancer Returns: The Mary Schnack Story</i> TRT: 1:40, Exits: 6:40*</p>	<p><b>5:10 p.m.</b> Prog. <b>006</b></p> <p><b>iThemba</b> preceded by <i>Deep Blue Breath</i> TRT: 1:30, Exits: 6:40*</p>		<p><b>5:00 p.m.</b> Prog. <b>005</b></p> <p><b>Cracks</b> TRT: 1:44, Exits: 6:44*</p>	<p><b>6:00 p.m.</b> Prog. <b>007</b></p> <p><b>They All Laughed</b> Film presentation and Q&amp;A discussion with the legendary <b>Peter Bogdanovich</b> TRT: 1:55, Exits: 7:55*</p>	
<p><b>8:00 p.m.</b> Prog. <b>008</b></p> <p><b>Happy, Happy</b> preceded by <i>The Road Home</i> TRT: 1:49, Exits: 9:49*</p>	<p><b>8:10 p.m.</b> Prog. <b>010</b></p> <p><b>The Heir Apparent: Largo Winch</b> TRT: 1:48, Exits: 9:58*</p>		<p><b>8:00 p.m.</b> Prog. <b>009</b></p> <p><b>Rumble of the Stones</b> TRT: 1:40, Exits: 9:40*</p>		

# MONDAY, FEB. 20

\* TRT = Total Run Time. TRT and Exit times never include the Q&A with the filmmakers and/or celebrity guests. Please allow extra time if staying for those. Schedule subject to change.

HARKINS 1	HARKINS 2	HARKINS 3	MARY D. FISHER THEATRE	SEDONA PERFORMING ARTS CENTER	SEDONA ROUGE THEATRE
				<p><b>9:00 a.m.</b> Prog. <b>011</b>  <b>Digital Dharma</b>                      preceded by  <b>The Iron Bird</b>                      TRT: 1:33, Exits: 10:33*</p>	
				<p><b>12:00 p.m.</b> Prog. <b>012</b>  <b>Miss Representation</b>                      preceded by  <b>Homecoming</b>                      TRT: 1:57, Exits: 1:57*</p>	
				<p><b>3:00 p.m.</b> Prog. <b>013</b>  <b>Finding Joe</b>                      preceded by  <b>Christel Clear</b>                      TRT: 1:37, Exits: 4:37*</p>	
<p><b>5:00 p.m.</b> Prog. <b>014</b>  <b>L'Amour Fou</b>                      TRT: 1:43, Exits: 6:43*</p>	<p><b>5:10 p.m.</b> Prog. <b>017</b>  <b>The Robber</b>                      preceded by  <b>Exquisite</b>                      TRT: 1:41, Exits: 6:51*</p>		<p><b>5:00 p.m.</b> Prog. <b>015</b>  <b>My Piece of the Pie</b>                      TRT: 1:49, Exits: 6:49*</p>	<p><b>6:00 p.m.</b> Prog. <b>018</b>  <b>Being Elmo</b>                      With special guest — Elmo!                      TRT: 1:16, Exits: 7:16*</p>	<p><b>5:00 p.m.</b> Prog. <b>016</b>  <b>So Right So Smart</b>                      preceded by  <b>Chasing Water</b>                      TRT: 1:45, Exits: 6:45*</p>
<p><b>8:00 p.m.</b> Prog. <b>019</b>  <b>La Rafle</b>                      TRT: 2:04, Exits: 10:04*</p>	<p><b>8:10 p.m.</b> Prog. <b>022</b>  <b>Crash</b>                      Film presentation and Q&amp;A discussion with Oscar-winner  <b>Bobby Moresco</b>                      TRT: 1:52, Exits: 10:02*</p>		<p><b>8:00 p.m.</b> Prog. <b>020</b>  <b>Elena</b>                      TRT: 1:49, Exits: 9:49*</p>		<p><b>8:00 p.m.</b> Prog. <b>021</b>  <b>Windfall</b>                      preceded by  <b>Farm to Trailer</b>                      TRT: 1:40, Exits: 9:40*</p>

# TUESDAY, FEB. 21

\* TRT = Total Run Time. TRT and Exit times never include the Q&A with the filmmakers and/or celebrity guests. Please allow extra time if staying for those. Schedule subject to change.

HARKINS 1	HARKINS 2	HARKINS 3	MARY D. FISHER THEATRE	SEDONA PERFORMING ARTS CENTER	SEDONA ROUGE THEATRE
<p><b>9:00 a.m.</b> Prog. <b>023</b></p> <p><b>What if Cannabis Cured Cancer</b> preceded by <i>When Cancer Returns: The Mary Schnack Story</i> TRT: 1:40, Exits: 10:40*</p>	<p><b>9:10 a.m.</b> Prog. <b>025</b></p> <p><b>The Stopwatch Gang</b> preceded by <i>The Legend of Pancho Barnes and the Happy Bottom Riding Club</i> TRT: 1:46, Exits: 10:56*</p>	<p><b>9:20 a.m.</b> Prog. <b>026</b></p> <p><b>Puzzle</b> preceded by <i>Lighthearted Boy</i> TRT: 1:44, Exits: 11:04*</p>	<p><b>9:00 a.m.</b> Prog. <b>024</b></p> <p><b>Free Workshop</b> <i>Screenwriting: From page to pitch to production</i> TRT: 2:30, Exits: 11:30*</p>	<p><b>9:30 a.m.</b> Prog. <b>027</b></p> <p>SCHOOL SCREENING: <b>The Lost Medallion</b> preceded by <i>Flight of the Melvin</i> TRT: 1:46, Exits: 11:16*</p>	
<p><b>12:00 p.m.</b> Prog. <b>028</b></p> <p><b>Apache 8</b> preceded by <i>We Are Not Extinct</i> TRT: 1:50, Exits: 1:50*</p>	<p><b>12:10 p.m.</b> Prog. <b>031</b></p> <p><b>The Loving Story</b> preceded by <i>Missile Crisis</i> TRT: 1:33, Exits: 1:43*</p>	<p><b>12:20 p.m.</b> Prog. <b>032</b></p> <p><b>Hermano</b> TRT: 1:37, Exits: 1:57*</p>	<p><b>12:00 p.m.</b> Prog. <b>029</b></p> <p><b>Elevate</b> preceded by <i>Play By Play</i> TRT: 1:46, Exits: 1:46*</p>		<p><b>12:00 p.m.</b> Prog. <b>030</b></p> <p><b>Crime After Crime</b> preceded by <i>Rosie Takes the Train</i> TRT: 1:46, Exits: 1:46*</p>
<p><b>3:00 p.m.</b> Prog. <b>033</b></p> <p><b>The Carrier</b> TRT: 1:28, Exits: 4:28*</p>	<p><b>3:10 p.m.</b> Prog. <b>036</b></p> <p><b>Close To Me</b> TRT: 1:40, Exits: 4:50*</p>	<p><b>3:20 p.m.</b> Prog. <b>037</b></p> <p><b>The Renaissance of Mata Ortiz</b> preceded by <i>Kaziah the Goat Woman</i> TRT: 1:41, Exits: 5:01*</p>	<p><b>3:00 p.m.</b> Prog. <b>034</b></p> <p><b>iThemba</b> preceded by <i>Deep Blue Breath</i> TRT: 1:30, Exits: 4:30*</p>		<p><b>3:00 p.m.</b> Prog. <b>035</b></p> <p><b>Sironia</b> TRT: 1:44, Exits: 4:44*</p>
<p><b>6:00 p.m.</b> Prog. <b>039</b></p> <p><b>The Wedding Party</b> preceded by <i>Cataplexy</i> TRT: 1:45, Exits: 7:45*</p>	<p><b>6:10 p.m.</b> Prog. <b>042</b></p> <p><b>The Women on the 6th Floor</b> preceded by <i>Everyone Says I Love You</i> TRT: 1:50, Exits: 8:00*</p>	<p><b>6:20 p.m.</b> Prog. <b>043</b></p> <p><b>An Ecology of Mind</b> preceded by <i>Marion Stoddart: The Work of 100</i> TRT: 1:30, Exits: 7:50*</p>	<p><b>6:00 p.m.</b> Prog. <b>040</b></p> <p><b>Bobby Fischer Against the World</b> preceded by <i>The Sleepy Count</i> TRT: 1:47, Exits: 7:47*</p>	<p><b>5:30 p.m.</b> Prog. <b>038</b></p> <p><b>The Trouble with Cali</b> With special guests — The Sorvino Family TRT: 1:30, Exits: 7:00*</p>	<p><b>6:00 p.m.</b> Prog. <b>041</b></p> <p><b>Becoming Santa</b> TRT: 1:37, Exits: 7:37*</p>
<p><b>9:00 p.m.</b> Prog. <b>045</b></p> <p><b>Inuk</b> preceded by <i>Symmetry</i> TRT: 1:48, Exits: 10:48*</p>	<p><b>9:10 p.m.</b> Prog. <b>048</b></p> <p><b>The Heir Apparent: Largo Winch</b> TRT: 1:48, Exits: 10:58*</p>	<p><b>9:20 p.m.</b> Prog. <b>049</b></p> <p><b>An Encounter with Simone Weil</b> preceded by <i>We Shall Not Be Moved</i> TRT: 1:36, Exits: 10:56*</p>	<p><b>9:00 p.m.</b> Prog. <b>046</b></p> <p><b>Restoration</b> TRT: 1:45, Exits: 10:45*</p>	<p><b>8:30 p.m.</b> Prog. <b>044</b></p> <p><b>Cellmates</b> preceded by <i>Leviticus: God's Law</i> TRT: 1:32, Exits: 10:02*</p>	<p><b>9:00 p.m.</b> Prog. <b>047</b></p> <p><b>Wish Me Away</b> TRT: 2:00, Exits: 11:00*</p>

# WEDNESDAY, FEB. 22

\* TRT = Total Run Time. TRT and Exit times never include the Q&A with the filmmakers and/or celebrity guests.  
Please allow extra time if staying for those. Schedule subject to change.

## HARKINS 1

## HARKINS 2

## HARKINS 3

## MARY D. FISHER THEATRE

## SEDONA PERFORMING ARTS CENTER

## SEDONA ROUGE THEATRE

9:00 a.m. Prog. 050

**Holy Wars**  
preceded by  
**Wrigley and King**

TRT: 1:31, Exits: 10:31\*

9:10 a.m. Prog. 053

**More Than Frybread**

TRT: 1:42, Exits: 10:52\*

9:20 a.m. Prog. 054

**Quill**  
preceded by  
**White Space**

TRT: 1:49, Exits: 11:09\*

9:00 a.m. Prog. 051

**Free Workshop**  
**Production Design:**  
**Making the director's**  
**vision come to life**

TRT: 2:30, Exits: 11:30\*

9:30 a.m. Prog. 055

SCHOOL SCREENING:  
**Sophie**  
preceded by  
**My Hometown**

TRT: 1:50, Exits: 11:20\*

9:00 a.m. Prog. 052

**Hot Coffee**

TRT: 1:26, Exits: 10:26\*

12:00 p.m. Prog. 056

**To Sir, With Love**  
With special guest —  
Oscar-winner Don Black

TRT: 1:45, Exits: 1:45\*

12:10 p.m. Prog. 059

**Brother's Keeper**

TRT: 1:59, Exits: 2:09\*

12:20 p.m. Prog. 060

**Windfall**  
preceded by  
**Farm to Trailer**

TRT: 1:40, Exits: 2:00\*

12:00 p.m. Prog. 057

**Granito**  
preceded by  
**Grandmothers**

TRT: 1:29, Exits: 1:29\*

12:00 p.m. Prog. 058

**The Big Fix**

TRT: 1:28, Exits: 1:28\*

3:00 p.m. Prog. 061

**Hud**  
CLASSIC FILM!

TRT: 1:52, Exits: 4:52\*

3:10 p.m. Prog. 064

**My Last Day**  
**Without You**  
preceded by  
**The Couple**

TRT: 1:44, Exits: 4:54\*

3:20 p.m. Prog. 065

**Mulberry Child**  
preceded by  
**The Dancer**

TRT: 1:37, Exits: 4:57\*

3:00 p.m. Prog. 062

**The Robber**  
preceded by  
**Exquisite**

TRT: 1:41, Exits: 4:41\*

3:00 p.m. Prog. 063

**If a Tree Falls**  
preceded by  
**A Salton Soul**

TRT: 1:38, Exits: 4:38\*

6:00 p.m. Prog. 067

**Wolves Unleashed**  
preceded by  
**Anna, Emma**  
**and the Condors**

TRT: 1:49, Exits: 7:49\*

6:10 p.m. Prog. 070

**Being Elmo**  
With special guest — Elmo!

TRT: 1:16, Exits: 7:26\*

6:20 p.m. Prog. 071

**Rumble of**  
**the Stones**

TRT: 1:40, Exits: 8:00\*

6:00 p.m. Prog. 068

**Hermano**

TRT: 1:37, Exits: 7:57\*

5:30 p.m. Prog. 066

**In Good Time:**  
**The Piano Jazz of**  
**Marian McPartland**

TRT: 1:25, Exits: 6:55\*

6:00 p.m. Prog. 069

Shorts Program 2:  
**Wondrous But**  
**Weird Shorts**

TRT: 1:44, Exits: 7:44\*

9:00 p.m. Prog. 073

**Turn Me On,**  
**Dammit!**  
preceded by  
**Love At First Sight**

TRT: 1:31, Exits: 10:31\*

9:10 p.m. Prog. 076

**You've Been**  
**Trumped**  
preceded by  
**Among Giants**

TRT: 1:49, Exits: 10:59\*

9:20 p.m. Prog. 077

**Acquainted With**  
**The Night**  
preceded by  
**The Mono Lake Story**

TRT: 1:44, Exits: 11:04\*

9:00 p.m. Prog. 074

**Puzzle**  
preceded by  
**Lighthearted Boy**

TRT: 1:44, Exits: 10:44\*

8:00 p.m. Prog. 072

Wednesday Jazz Stretch:  
**Brubeck Brothers**  
**Live Jazz Concert!**

TRT: 1:30, Exits: 9:30\*

9:00 p.m. Prog. 075

**The Dream Play**  
preceded by  
**A Finger, Two Dots**  
**Then Me**

TRT: 1:45, Exits: 10:45\*

# THURSDAY, FEB. 23

\* TRT = Total Run Time. TRT and Exit times never include the Q&A with the filmmakers and/or celebrity guests. Please allow extra time if staying for those. Schedule subject to change.

HARKINS 1	HARKINS 2	HARKINS 3	MARY D. FISHER THEATRE	SEDONA PERFORMING ARTS CENTER	SEDONA ROUGE THEATRE
<p><b>9:00 a.m.</b> Prog. <b>078</b></p> <p><b>Stories of Courage: From the Ground Up, The Sea Is All I Know and In Times of War</b></p> <p>TRT: 1:30, Exits: 10:30*</p>	<p><b>9:10 a.m.</b> Prog. <b>081</b></p> <p><b>The Athlete</b> preceded by <b>Apricots</b></p> <p>TRT: 1:52, Exits: 11:02*</p>	<p><b>9:20 a.m.</b> Prog. <b>082</b></p> <p><b>The Activist Within</b> preceded by <b>The Maiden and the Princess</b></p> <p>TRT: 1:21, Exits: 10:41*</p>	<p><b>9:00 a.m.</b> Prog. <b>079</b></p> <p><b>Free Workshop</b> <b>Women Documentary Filmmakers</b></p> <p>TRT: 2:30, Exits: 11:30*</p>	<p><b>9:30 a.m.</b> Prog. <b>083</b></p> <p><b>SCHOOL SCREENING: 25 Hill</b></p> <p>TRT: 1:30, Exits: 11:00*</p>	<p><b>9:00 a.m.</b> Prog. <b>080</b></p> <p><b>So Right So Smart</b> preceded by <b>Chasing Water</b></p> <p>TRT: 1:45, Exits: 10:45*</p>
<p><b>12:00 p.m.</b> Prog. <b>084</b></p> <p><b>With Great Power: The Stan Lee Story</b> preceded by <b>Unheralded</b></p> <p>TRT: 1:48, Exits: 1:48*</p>	<p><b>12:10 p.m.</b> Prog. <b>087</b></p> <p><b>Restoration</b></p> <p>TRT: 1:45, Exits: 1:55*</p>	<p><b>12:20 p.m.</b> Prog. <b>088</b></p> <p><b>The Renaissance of Mata Ortiz</b> preceded by <b>Kaziah the Goat Woman</b></p> <p>TRT: 1:41, Exits: 2:01*</p>	<p><b>12:00 p.m.</b> Prog. <b>085</b></p> <p><b>ENCORE SCREENING: Pray the Devil Back to Hell</b></p> <p>TRT: 1:12, Exits: 1:12*</p>		<p><b>12:00 p.m.</b> Prog. <b>086</b></p> <p><b>An Ecology of Mind</b> preceded by <b>Marion Stoddart: The Work of 100</b></p> <p>TRT: 1:30, Exits: 1:30*</p>
<p><b>3:00 p.m.</b> Prog. <b>089</b></p> <p><b>Summertime</b> CLASSIC FILM!</p> <p>TRT: 1:40, Exits: 4:40*</p>	<p><b>3:10 p.m.</b> Prog. <b>092</b></p> <p><b>The Whale</b></p> <p>TRT: 1:29, Exits: 4:39*</p>	<p><b>3:20 p.m.</b> Prog. <b>093</b></p> <p><b>Inuk</b> preceded by <b>Symmetry</b></p> <p>TRT: 1:48, Exits: 5:08*</p>	<p><b>3:00 p.m.</b> Prog. <b>090</b></p> <p><b>Diamonds Are Forever</b> With special guest — Oscar-winner Don Black</p> <p>TRT: 2:00, Exits: 5:00*</p>		<p><b>3:00 p.m.</b> Prog. <b>091</b></p> <p><b>Bobby Fischer Against the World</b> preceded by <b>The Sleepy Count</b></p> <p>TRT: 1:47, Exits: 4:47*</p>
<p><b>6:00 p.m.</b> Prog. <b>095</b></p> <p><b>Shorts Program 1: Just Great Shorts</b></p> <p>TRT: 1:35, Exits: 7:35*</p>	<p><b>6:10 p.m.</b> Prog. <b>098</b></p> <p><b>The Way</b></p> <p>TRT: 1:55, Exits: 8:05*</p>	<p><b>6:20 p.m.</b> Prog. <b>099</b></p> <p><b>Elevate</b> preceded by <b>Play By Play</b></p> <p>TRT: 1:46, Exits: 8:06*</p>	<p><b>6:00 p.m.</b> Prog. <b>096</b></p> <p><b>The Carrier</b></p> <p>TRT: 1:28, Exits: 7:28*</p>	<p><b>5:30 p.m.</b> Prog. <b>094</b></p> <p><b>The Trouble with the Truth</b> With special guest — Lea Thompson</p> <p>TRT: 1:36, Exits: 7:06*</p>	<p><b>6:00 p.m.</b> Prog. <b>097</b></p> <p><b>Finding Joe</b> preceded by <b>Christel Clear</b></p> <p>TRT: 1:37, Exits: 7:37*</p>
<p><b>9:00 p.m.</b> Prog. <b>101</b></p> <p><b>Shuffle</b> preceded by <b>Time Freak</b></p> <p>TRT: 1:33, Exits: 10:33*</p>	<p><b>9:10 p.m.</b> Prog. <b>104</b></p> <p><b>The Wedding Party</b> preceded by <b>Cataplexy</b></p> <p>TRT: 1:45, Exits: 10:55*</p>	<p><b>9:20 p.m.</b> Prog. <b>105</b></p> <p><b>Holy Wars</b> preceded by <b>Wrigley and King</b></p> <p>TRT: 1:31, Exits: 10:51*</p>	<p><b>9:00 p.m.</b> Prog. <b>102</b></p> <p><b>Nicky's Family</b> preceded by <b>Two</b></p> <p>TRT: 1:44, Exits: 10:44*</p>	<p><b>8:30 p.m.</b> Prog. <b>100</b></p> <p><b>Carol Channing: Larger Than Life</b></p> <p>TRT: 1:23, Exits: 9:53*</p>	<p><b>9:00 p.m.</b> Prog. <b>103</b></p> <p><b>Losing Control</b> preceded by <b>Bread &amp; Kisses</b></p> <p>TRT: 1:44, Exits: 10:44*</p>

# FRIDAY, FEB. 24

\* TRT = Total Run Time. TRT and Exit times never include the Q&A with the filmmakers and/or celebrity guests. Please allow extra time if staying for those. Schedule subject to change.

HARKINS 1	HARKINS 2	HARKINS 3	MARY D. FISHER THEATRE	SEDONA PERFORMING ARTS CENTER	SEDONA ROUGE THEATRE
<p><b>9:00 a.m.</b> Prog. <b>106</b></p> <p><b>The Women on the 6th Floor</b> preceded by <b>Everyone Says I Love You</b> TRT: 1:50, Exits: 10:50*</p>	<p><b>9:10 a.m.</b> Prog. <b>109</b></p> <p><b>Happy, Happy</b> preceded by <b>The Road Home</b> TRT: 1:49, Exits: 10:59*</p>	<p><b>9:20 a.m.</b> Prog. <b>110</b></p> <p><b>Cracks</b> TRT: 1:44, Exits: 11:04*</p>	<p><b>9:00 a.m.</b> Prog. <b>107</b></p> <p><b>Free Workshop</b> <b>Music and Lyrics in the Movies</b> TRT: 2:30, Exits: 11:30*</p>	<p><b>9:30 a.m.</b> <b>111</b></p> <p>SCHOOL SCREENING: <b>Miss Representation</b> preceded by <b>Homecoming</b> TRT: 1:57, Exits: 11:27*</p>	<p><b>9:00 a.m.</b> Prog. <b>108</b></p> <p><b>Wolves Unleashed</b> preceded by <b>Anna, Emma and the Condors</b> TRT: 1:49, Exits: 10:49*</p>
<p><b>12:00 p.m.</b> Prog. <b>112</b></p> <p><b>Lula, Son of Brazil</b> TRT: 2:08, Exits: 2:08*</p>	<p><b>12:10 p.m.</b> Prog. <b>115</b></p> <p><b>Jun-Ai</b> TRT: 1:50, Exits: 2:00*</p>	<p><b>12:20 p.m.</b> Prog. <b>116</b></p> <p><b>Stitched, The Film</b> preceded by <b>Tina Mion - Behind the Studio Door</b> TRT: 1:38, Exits: 1:58*</p>	<p><b>12:00 p.m.</b> Prog. <b>113</b></p> <p><b>Born Free</b> With special guest — Oscar-winner Don Black TRT: 1:35, Exits: 1:35*</p>		<p><b>12:00 p.m.</b> Prog. <b>114</b></p> <p><b>You've Been Trumped</b> preceded by <b>Among Giants</b> TRT: 1:49, Exits: 1:49*</p>
<p><b>3:00 p.m.</b> Prog. <b>117</b></p> <p><b>All About Eve</b> CLASSIC FILM! TRT: 2:18, Exits: 5:18*</p>	<p><b>3:10 p.m.</b> Prog. <b>120</b></p> <p><b>Becoming Santa</b> TRT: 1:37, Exits: 4:47*</p>	<p><b>3:20 p.m.</b> Prog. <b>121</b></p> <p><b>Acquainted With The Night</b> preceded by <b>The Mono Lake Story</b> TRT: 1:44, Exits: 5:04*</p>	<p><b>3:00 p.m.</b> Prog. <b>118</b></p> <p><b>Hot Coffee</b> TRT: 1:26, Exits: 4:26*</p>		<p><b>3:00 p.m.</b> Prog. <b>119</b></p> <p><b>More Than Frybread</b> TRT: 1:42, Exits: 4:42*</p>
<p><b>6:00 p.m.</b> Prog. <b>123</b></p> <p><b>Annabelle &amp; Bear</b> preceded by <b>The Mirror</b> TRT: 1:47, Exits: 7:47*</p>	<p><b>6:10 p.m.</b> Prog. <b>126</b></p> <p><b>Close To Me</b> TRT: 1:40, Exits: 7:50*</p>	<p><b>6:20 p.m.</b> Prog. <b>127</b></p> <p><b>Granito</b> preceded by <b>Grandmothers</b> TRT: 1:29, Exits: 7:49*</p>	<p><b>6:00 p.m.</b> Prog. <b>124</b></p> <p><b>The Loving Story</b> preceded by <b>Missile Crisis</b> TRT: 1:33, Exits: 7:33*</p>	<p><b>5:30 p.m.</b> Prog. <b>122</b></p> <p><b>The Trouble with Cali</b> With special guests — The Sorvino Family TRT: 1:30, Exits: 7:00*</p>	<p><b>6:00 p.m.</b> Prog. <b>125</b></p> <p><b>Apache 8</b> preceded by <b>We Are Not Extinct</b> TRT: 1:50, Exits: 7:50*</p>
<p><b>9:00 p.m.</b> Prog. <b>129</b></p> <p>Shorts Program 2: <b>Wondrous But Weird Shorts</b> TRT: 1:44, Exits: 10:44*</p>	<p><b>9:10 p.m.</b> Prog. <b>132</b></p> <p><b>Sironia</b> TRT: 1:44, Exits: 10:54*</p>	<p><b>9:20 p.m.</b> Prog. <b>133</b></p> <p><b>Cellmates</b> preceded by <b>Leviticus: God's Law</b> TRT: 1:32, Exits: 10:52*</p>	<p><b>9:00 p.m.</b> Prog. <b>130</b></p> <p><b>If a Tree Falls</b> preceded by <b>A Salton Soul</b> TRT: 1:38, Exits: 10:38*</p>	<p><b>8:30 p.m.</b> Prog. <b>128</b></p> <p><b>Peach Plum Pear</b> An Evening with Mackenzie Phillips! TRT: 1:34, Exits: 10:34*</p>	<p><b>9:00 p.m.</b> Prog. <b>131</b></p> <p><b>Brother's Keeper</b> TRT: 1:59, Exits: 10:59*</p>

# SATURDAY, FEB. 25

\* TRT = Total Run Time. TRT and Exit times never include the Q&A with the filmmakers and/or celebrity guests. Please allow extra time if staying for those. Schedule subject to change.

HARKINS 1	HARKINS 2	HARKINS 3	MARY D. FISHER THEATRE	SEDONA PERFORMING ARTS CENTER	SEDONA ROUGE THEATRE
<p><b>9:00 a.m.</b> Prog. <b>134</b></p> <p><b>25 Hill</b></p> <p>TRT: 1:30, Exits: 10:30*</p>	<p><b>9:10 a.m.</b> Prog. <b>138</b></p> <p>Shorts Program 1: <b>Just Great Shorts</b></p> <p>TRT: 1:35, Exits: 10:45*</p>	<p><b>9:20 a.m.</b> Prog. <b>139</b></p> <p><b>Elena</b></p> <p>TRT: 1:49, Exits: 11:09*</p>	<p><b>9:00 a.m.</b> Prog. <b>135</b></p> <p><b>An Encounter with Simone Weil</b> preceded by <b>We Shall Not Be Moved</b></p> <p>TRT: 1:36, Exits: 10:36*</p>	<p><b>9:00 a.m.</b> Prog. <b>136</b></p> <p>ENCORE SCREENING: <b>Mao's Last Dancer</b> With special guest — Film Editor Mark Warner</p> <p>TRT: 1:57, Exits: 10:57*</p>	<p><b>9:00 a.m.</b> Prog. <b>137</b></p> <p><b>The Lost Medallion</b> preceded by <b>Flight of the Melvin</b></p> <p>TRT: 1:46, Exits: 10:46*</p>
<p><b>12:00 p.m.</b> Prog. <b>140</b></p> <p><b>Quill</b> preceded by <b>White Space</b></p> <p>TRT: 1:49, Exits: 1:49*</p>	<p><b>12:10 p.m.</b> Prog. <b>144</b></p> <p><b>La Rafle</b></p> <p>TRT: 2:04, Exits: 2:14*</p>	<p><b>12:20 p.m.</b> Prog. <b>145</b></p> <p><b>Nicky's Family</b> preceded by <b>Two</b></p> <p>TRT: 1:44, Exits: 2:04*</p>	<p><b>12:00 p.m.</b> Prog. <b>141</b></p> <p><b>Mulberry Child</b> preceded by <b>The Dancer</b></p> <p>TRT: 1:37, Exits: 1:37*</p>	<p><b>12:00 p.m.</b> Prog. <b>142</b></p> <p><b>Stitched, The Film</b> preceded by <b>Tina Mion - Behind the Studio Door</b></p> <p>TRT: 1:38, Exits: 1:38*</p>	<p><b>12:00 p.m.</b> Prog. <b>143</b></p> <p><b>Sophie</b> preceded by <b>My Hometown</b></p> <p>TRT: 1:50, Exits: 1:50*</p>
<p><b>3:00 p.m.</b> Prog. <b>146</b></p> <p><b>Jun-Ai</b></p> <p>TRT: 1:50, Exits: 4:50*</p>	<p><b>3:10 p.m.</b> Prog. <b>150</b></p> <p><b>The Trouble with the Truth</b> With special guest — Lea Thompson</p> <p>TRT: 1:36, Exits: 4:46*</p>	<p><b>3:20 p.m.</b> Prog. <b>151</b></p> <p><b>Wish Me Away</b></p> <p>TRT: 2:00, Exits: 5:20*</p>	<p><b>3:00 p.m.</b> Prog. <b>147</b></p> <p><b>Shuffle</b> preceded by <b>Time Freak</b></p> <p>TRT: 1:33, Exits: 4:33*</p>	<p><b>3:00 p.m.</b> Prog. <b>148</b></p> <p><b>The Whale</b></p> <p>TRT: 1:29, Exits: 4:29*</p>	<p><b>3:00 p.m.</b> Prog. <b>149</b></p> <p>Stories of Courage: <b>From the Ground Up,</b> <b>The Sea Is All I Know</b> and <b>In Times of War</b></p> <p>TRT: 1:30, Exits: 4:30*</p>
<p><b>6:00 p.m.</b> Prog. <b>152</b></p> <p><b>Losing Control</b> preceded by <b>Bread &amp; Kisses</b></p> <p>TRT: 1:44, Exits: 7:44*</p>	<p><b>6:10 p.m.</b> Prog. <b>156</b></p> <p><b>Close Encounters of the Third Kind</b> Special dedication tribute to Frank Warner</p> <p>TRT: 1:50, Exits: 8:00*</p>	<p><b>6:20 p.m.</b> Prog. <b>157</b></p> <p><b>The Dream Play</b> preceded by <b>A Finger, Two Dots Then Me</b></p> <p>TRT: 1:45, Exits: 8:05*</p>	<p><b>6:00 p.m.</b> Prog. <b>153</b></p> <p><b>The Activist Within</b> preceded by <b>The Maiden and the Princess</b></p> <p>TRT: 1:21, Exits: 7:21*</p>	<p><b>6:00 p.m.</b> Prog. <b>154</b></p> <p><b>The Way</b></p> <p>TRT: 1:55, Exits: 7:55*</p>	<p><b>6:00 p.m.</b> Prog. <b>155</b></p> <p><b>With Great Power: The Stan Lee Story</b> preceded by <b>Unheralded</b></p> <p>TRT: 1:48, Exits: 7:48*</p>
<p><b>9:00 p.m.</b> Prog. <b>158</b></p> <p><b>Crime After Crime</b> preceded by <b>Rosie Takes the Train</b></p> <p>TRT: 1:46, Exits: 10:46*</p>	<p><b>9:10 p.m.</b> Prog. <b>162</b></p> <p><b>Turn Me On, Dammit!</b> preceded by <b>Love At First Sight</b></p> <p>TRT: 1:31, Exits: 10:41*</p>	<p><b>9:20 p.m.</b> Prog. <b>163</b></p> <p><b>The Stopwatch Gang</b> preceded by <b>The Legend of Pancho Barnes and the Happy Bottom Riding Club</b></p> <p>TRT: 1:46, Exits: 11:06*</p>	<p><b>9:00 p.m.</b> Prog. <b>159</b></p> <p><b>The Athlete</b> preceded by <b>Apricots</b></p> <p>TRT: 1:52, Exits: 10:52*</p>	<p><b>9:00 p.m.</b> Prog. <b>160</b></p> <p><b>The Last Gladiators</b> With special guest — NHL Legend Chris "Knuckles" Nilan</p> <p>TRT: 1:34, Exits: 10:34*</p>	<p><b>9:00 p.m.</b> Prog. <b>161</b></p> <p><b>My Last Day Without You</b> preceded by <b>The Couple</b></p> <p>TRT: 1:44, Exits: 10:44*</p>

# SUNDAY, FEB. 26

\* TRT = Total Run Time. TRT and Exit times never include the Q&A with the filmmakers and/or celebrity guests. Please allow extra time if staying for those. Schedule subject to change.

HARKINS 1	HARKINS 2	HARKINS 3	MARY D. FISHER THEATRE	SEDONA PERFORMING ARTS CENTER	SEDONA ROUGE THEATRE
<p>9:00 a.m. Prog. 164</p> <p><i>Lula, Son of Brazil</i></p> <p>TRT: 2:08, Exits: 11:08*</p>	<p>9:10 a.m. Prog. 167</p> <p><i>Annabelle &amp; Bear</i> preceded by <i>The Mirror</i></p> <p>TRT: 1:47, Exits: 10:57*</p>	<p>9:20 a.m. Prog. 168</p> <p><i>My Piece of the Pie</i></p> <p>TRT: 1:49, Exits: 11:09*</p>	<p>9:00 a.m. Prog. 165</p> <p><i>L'Amour Fou</i></p> <p>TRT: 1:43, Exits: 10:43*</p>	<p>10:00 a.m. Prog. 169</p> <p><b>FESTIVAL AWARDS CEREMONY</b></p>	<p>9:00 a.m. Prog. 166</p> <p><i>Carol Channing: Larger Than Life</i></p> <p>TRT: 1:23, Exits: 10:23*</p>
<p>12:00 p.m. Prog. 170</p> <p><i>Directors' Choice FESTIVAL FAVORITE</i> TBA</p>	<p>12:10 p.m. Prog. 174</p> <p><i>Directors' Choice FESTIVAL FAVORITE</i> TBA</p>	<p>12:20 p.m. Prog. 175</p> <p><i>Directors' Choice FESTIVAL FAVORITE</i> TBA</p>	<p>12:00 p.m. Prog. 171</p> <p><i>Directors' Choice FESTIVAL FAVORITE</i> TBA</p>	<p>12:00 p.m. Prog. 172</p> <p><i>Directors' Choice FESTIVAL FAVORITE</i> TBA</p>	<p>12:00 p.m. Prog. 173</p> <p><i>Directors' Choice FESTIVAL FAVORITE</i> TBA</p>
<p>3:00 p.m. Prog. 176</p> <p><i>Audience Choice FESTIVAL FAVORITE</i> TBA</p>	<p>3:10 p.m. Prog. 180</p> <p><i>Audience Choice FESTIVAL FAVORITE</i> TBA</p>	<p>3:20 p.m. Prog. 181</p> <p><i>Audience Choice FESTIVAL FAVORITE</i> TBA</p>	<p>3:00 p.m. Prog. 177</p> <p><i>Audience Choice FESTIVAL FAVORITE</i> TBA</p>	<p>3:00 p.m. Prog. 178</p> <p><i>Audience Choice FESTIVAL FAVORITE</i> TBA</p>	<p>3:00 p.m. Prog. 179</p> <p><i>Audience Choice FESTIVAL FAVORITE</i> TBA</p>
<p>6:00 p.m. Prog. 182</p> <p><i>Closing Night Film WUTHERING HEIGHTS</i></p> <p>TRT: 2:09, Exits: 8:09*</p>	<p>6:10 p.m. Prog. 186</p> <p><i>Closing Night Film A DANGEROUS METHOD</i></p> <p>TRT: 1:39, Exits: 7:49*</p>	<p>6:10 p.m. Prog. 187</p> <p><i>Closing Night Film A DANGEROUS METHOD</i></p> <p>TRT: 1:39, Exits: 7:49*</p>	<p>6:00 p.m. Prog. 183</p> <p><i>Oscars on the Rocks</i> Watch the Academy Awards Live Presentation</p>	<p>6:00 p.m. Prog. 184</p> <p><b>TBA</b> To Be Announced</p>	<p>6:00 p.m. Prog. 185</p> <p><i>Oscars on the Rocks</i> Watch the Academy Awards Live Presentation</p>